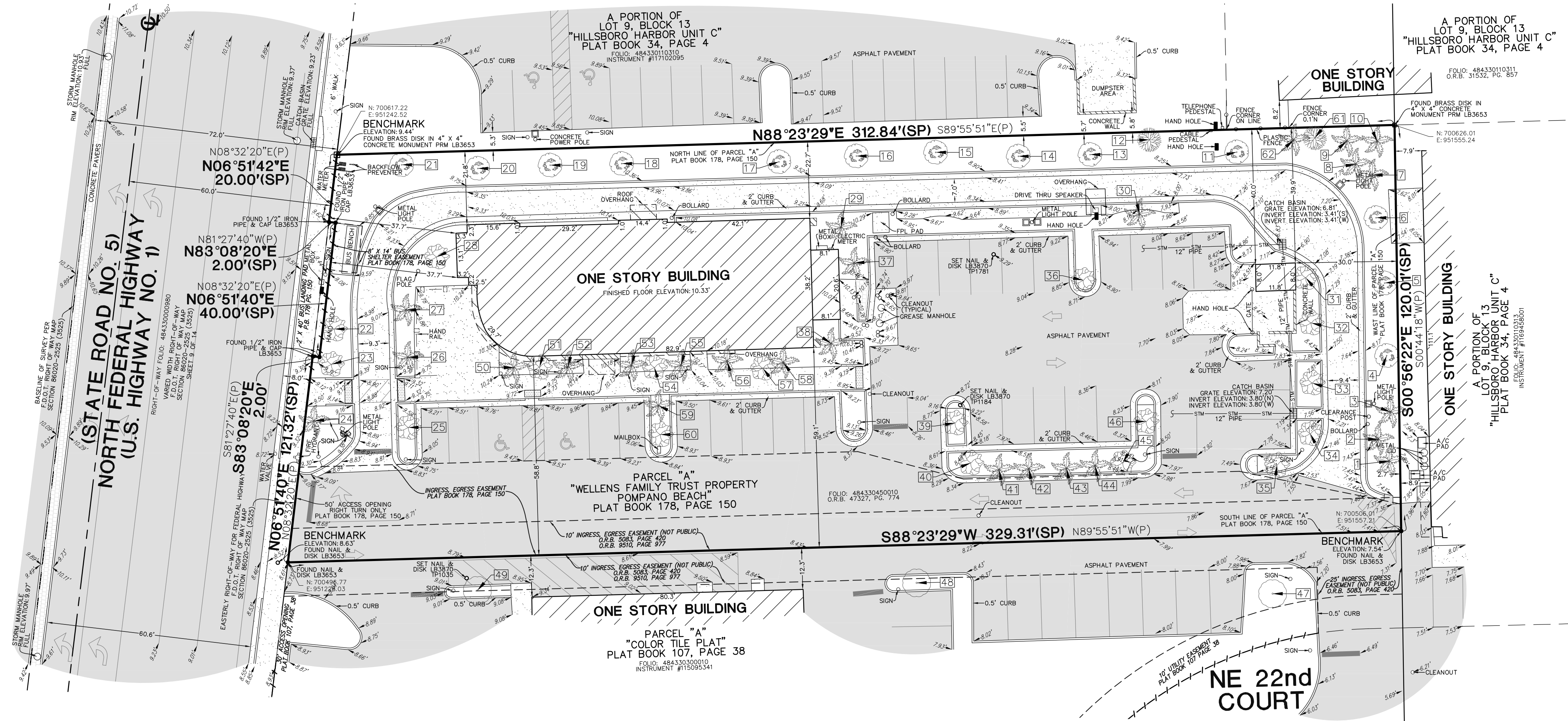




## Horticultural Aspects, LLC

Location: 2250 N. Federal Hwy Pompano Beach, FL 33062

Tree Number	Common Name	Genus Species	DBH (Inches)	Height OA (Feet)	Height CT (Feet)	Spread (Feet)	Condition Rating (%)
1	Cabbage palm	<i>Sabal palmetto</i>	8	27	21	12	90%
2	Cabbage palm	<i>Sabal palmetto</i>	13	28	22	12	85%
3	Cabbage palm	<i>Sabal palmetto</i>	9	24	19	12	85%
4	Southern live oak	<i>Quercus virginiana</i>	13	25	—	20	80.0%
5	Southern live oak	<i>Quercus virginiana</i>	11	35	—	18	85%
6	Southern live oak	<i>Quercus virginiana</i>	16	28	—	18	85%
7	Cabbage palm	<i>Sabal palmetto</i>	11	27	21	12	80.0%
8	Cabbage palm	<i>Sabal palmetto</i>	18	22	16	12	85.0%
9	Cabbage palm	<i>Sabal palmetto</i>	16	28	22	12	80.0%
10	Cabbage palm	<i>Sabal palmetto</i>	16	29	23	12	90%
11	Southern live oak	<i>Quercus virginiana</i>	11	25	—	16	90%
12	Black olive	<i>Bucida buceras</i>	20	45	—	35	85%
13	Southern live oak	<i>Quercus virginiana</i>	12	28	—	16	80%
14	Southern live oak	<i>Quercus virginiana</i>	14	28	—	18	85.0%
15	Southern live oak	<i>Quercus virginiana</i>	11	32	—	16	85.0%
16	Southern live oak	<i>Quercus virginiana</i>	9	30	—	18	75%
17	Southern live oak	<i>Quercus virginiana</i>	13	30	—	18	80.0%
18	Southern live oak	<i>Quercus virginiana</i>	11	35	—	16	85%
19	Southern live oak	<i>Quercus virginiana</i>	13	30	—	20	85%
20	Southern live oak	<i>Quercus virginiana</i>	7	24	—	15	85.0%
21	Southern live oak	<i>Quercus virginiana</i>	23	45	—	40	80%
22	Green buttonwood	<i>Conocarpus erectus</i>	14	25	—	25	80%
23	Green buttonwood	<i>Conocarpus erectus</i>	16	25	—	25	85%
24	Montgomery palm	<i>Veitchia arecina</i>	8	30	22	24	85.0%
25	Green buttonwood	<i>Conocarpus erectus</i>	16	25	—	25	80%
26	Montgomery palm	<i>Veitchia arecina</i>	18	32	24	25	90%
27	Montgomery palm	<i>Veitchia arecina</i>	16	32	25	25	55%
28	Ligustrum	<i>Ligustrum japonicum</i>	6	7	—	6	65.0%
29	Montgomery palm	<i>Veitchia arecina</i>	16	34	26	24	85%
30	Montgomery palm	<i>Veitchia arecina</i>	16	36	28	24	90%
31	East Palatka Holly	<i>Ilex x attenuata</i>	4	12	—	6	75.0%
32	East Palatka Holly	<i>Ilex x attenuata</i>	5	12	—	6	75.0%
33	East Palatka Holly	<i>Ilex x attenuata</i>	5	12	—	6	75.0%
34	East Palatka Holly	<i>Ilex x attenuata</i>	6	12	—	6	75.0%
35	East Palatka Holly	<i>Ilex x attenuata</i>	8	12	—	6	80.0%
36	East Palatka Holly	<i>Ilex x attenuata</i>	5	12	—	6	80.0%
37	Montgomery palm	<i>Veitchia arecina</i>	16	34	26	24	90%
38	Montgomery palm	<i>Veitchia arecina</i>	20	34	25	24	85%
39	East Palatka Holly	<i>Ilex x attenuata</i>	4	12	—	6	75.0%
40	East Palatka Holly	<i>Ilex x attenuata</i>	5	12	—	6	75.0%
41	Christmas palm	<i>Adonidia merrilli</i>	9	14	8	15	85.0%
42	Christmas palm	<i>Adonidia merrilli</i>	9	14	8	15	80.0%
43	Christmas palm	<i>Adonidia merrilli</i>	5	14	8	8	85.0%
44	Christmas palm	<i>Adonidia merrilli</i>	9	14	8	15	80.0%
45	East Palatka Holly	<i>Ilex x attenuata</i>	4	12	—	6	70.0%
46	East Palatka Holly	<i>Ilex x attenuata</i>	4	12	—	6	75.0%
47	Mahogany	<i>Swietenia mahogany</i>	12	30	—	25	85%
48	Mahogany	<i>Swietenia mahogany</i>	14	30	—	25	80%
49	Mahogany	<i>Swietenia mahogany</i>	13	35	—	30	70%
50	Solitaire palm	<i>Ptychosperma elegans</i>	4	29	23	8	75.0%
51	Jatropha	<i>Jatropha integerrima</i>	5	8	—	6	65%
52	Solitaire palm	<i>Ptychosperma elegans</i>	5	30	24	8	80%
53	Solitaire palm	<i>Ptychosperma elegans</i>	4	28	22	8	80.0%
54	Jatropha	<i>Jatropha integerrima</i>	5	10	—	8	80%
55	Solitaire palm	<i>Ptychosperma elegans</i>	4	28	22	8	75.0%
56	Solitaire palm	<i>Ptychosperma elegans</i>	6	30	24	8	65.0%
57	Jatropha	<i>Jatropha integerrima</i>	6	10	—	10	80%
58	Solitaire palm	<i>Ptychosperma elegans</i>	5	28	22	8	70.0%
59	Montgomery palm	<i>Veitchia arecina</i>	8	24	18	5	70.0%
60	East Palatka Holly	<i>Ilex x attenuata</i>	6	12	—	6	75%
61	Black olive	<i>Bucida buceras</i>	28	45	—	40	75%
62	Montgomery palm	<i>Veitchia arecina</i>	4	12	6	8	80.0%
Prepared by:	Justin Rogers	ISA Certified Arborist					
		FL - 9547A					



### LEGAL DESCRIPTION:

PARCEL "A", "WELLENS FAMILY TRUST PROPERTY POMPAÑO BEACH", ACCORDING TO THE PLAT THEREOF, AS RECORDED IN PLAT BOOK 178, PAGE 150, OF THE PUBLIC RECORDS OF BROWARD COUNTY, FLORIDA.

### NOTES:

- THIS SURVEY MAP AND REPORT OR THE COPIES THEREOF ARE NOT VALID WITHOUT THE ORIGINAL SIGNATURE AND SEAL OR AN ELECTRONIC SIGNATURE AND ELECTRONIC SEAL OF A FLORIDA LICENSED SURVEYOR AND MAPPER.
- THIS SITE CONTAINS 38,449 SQUARE FEET (0.8827 ACRES) MORE OR LESS.
- ELEVATIONS ARE BASED ON NORTH AMERICAN VERTICAL DATUM OF 1988. CITY OF POMPAÑO BEACH BENCHMARK #1014/2011; ELEVATION: 9.974 FEET AND 009/2011; ELEVATION: 19.806 FEET.
- FLOOD ZONE: X; BASE FLOOD ELEVATION: NONE; PANEL #12011C0188H; COMMUNITY #120055; MAP DATE: 8/18/14.
- THIS SITE LIES IN SECTION 30, TOWNSHIP 48 SOUTH, RANGE 43 EAST, BROWARD COUNTY, FLORIDA.
- BEARINGS ARE BASED ON STATE PLANE COORDINATES AND ARE RELATIVE TO THE NORTH AMERICAN DATUM OF 1983 WITH THE 1990 ADJUSTMENT, FL-E ZONE, WITH THE EAST RIGHT-OF-WAY LINE OF NORTH FEDERAL HIGHWAY (U.S. HIGHWAY NO. 1) (STATE ROAD NO. 5) BEING N06°51'43"E.
- REASONABLE EFFORTS WERE MADE REGARDING THE EXISTENCE AND THE LOCATION OF UNDERGROUND UTILITIES. THIS FIRM, HOWEVER, DOES NOT ACCEPT RESPONSIBILITY FOR THIS INFORMATION, BEFORE EXCAVATION OR CONSTRUCTION CONTACT THE APPROPRIATE UTILITY COMPANIES FOR FIELD VERIFICATION.
- THIS SURVEY IS CERTIFIED EXCLUSIVELY TO: BOWMAN CONSULTING GROUP, LTD; CHICK-FIL-A, INC., A GEORGIA CORPORATION.
- THE HORIZONTAL POSITIONAL ACCURACY OF WELL DEFINED IMPROVEMENTS ON THIS SURVEY IS ±0.2'. THE VERTICAL ACCURACY OF ELEVATIONS OF WELL DEFINED IMPROVEMENTS ON THIS SURVEY IS ±0.1'.
- THIS SITE CONTAINS 29 TOTAL CLEARLY IDENTIFIABLE PARKING SPACES (27 REGULAR & 2 DISABLED).
- THIS SURVEY WAS PREPARED WITHOUT BENEFIT OF A COMMITMENT FOR TITLE INSURANCE. ONLY PLATTED OR KNOWN EASEMENTS ARE DEPICTED HEREON.
- ALL RECORDED DOCUMENTS ARE PER BROWARD COUNTY RECORDS.
- THE TREE SYMBOLS DEPICTED HEREON ARE NOT SCALED TO TREE CANOPY.
- ALL MATTERS SHOWN ON RECORDED PLAT PROVIDED TO THE SURVEYOR DEPICTED HEREON AND SHOWN ON THE SURVEY.
- THERE WAS NO EVIDENCE OF RECENT EARTH MOVING WORK, BUILDING CONSTRUCTION, OR BUILDING ADDITIONS OBSERVED IN THE PROCESS OF CONDUCTING THE FIELDWORK.
- THERE ARE NO KNOWN PROPOSED CHANGES IN STREET RIGHT-OF-WAY LINES. THERE WAS NO EVIDENCE OF RECENT STREET OR SIDEWALK CONSTRUCTION OR REPAIRS OBSERVED IN THE PROCESS OF CONDUCTING THE FIELDWORK.

### LEGEND

CONCRETE	CONCRETE
ASPHALT PAVEMENT	ASPHALT PAVEMENT
ELEVATION	ELEVATION
UNDERGROUND STORM SEWER LINE	UNDERGROUND STORM SEWER LINE
UNDERGROUND SANITARY SEWER LINE	UNDERGROUND SANITARY SEWER LINE
NON-VEHICULAR ACCESS LINE	NON-VEHICULAR ACCESS LINE
CENTERLINE	CENTERLINE
F.D.O.T.	FLORIDA DEPARTMENT OF TRANSPORTATION
FPL	FLORIDA POWER & LIGHT COMPANY
LB	LICENSED BUSINESS
O.R.B.	OFFICIAL RECORDS BOOK
TP	TRAVERSE POINT (FOR FIELD INFORMATION ONLY)
A/C	AIR CONDITIONING
(P)	PLAT
(SP)	STATE PLANE
[XXXXXX]	STATE PLANE COORDINATES
[Palm Tree Symbol]	PALM TREE
[Oak Tree Symbol]	OAK TREE
[Mahogany Tree Symbol]	MAHOGANY TREE
[Black Olive Tree Symbol]	BLACK OLIVE TREE
[Undetermined Tree Symbol]	UNDETERMINED TREE
[Tree Identifier Symbol]	TREE IDENTIFIER

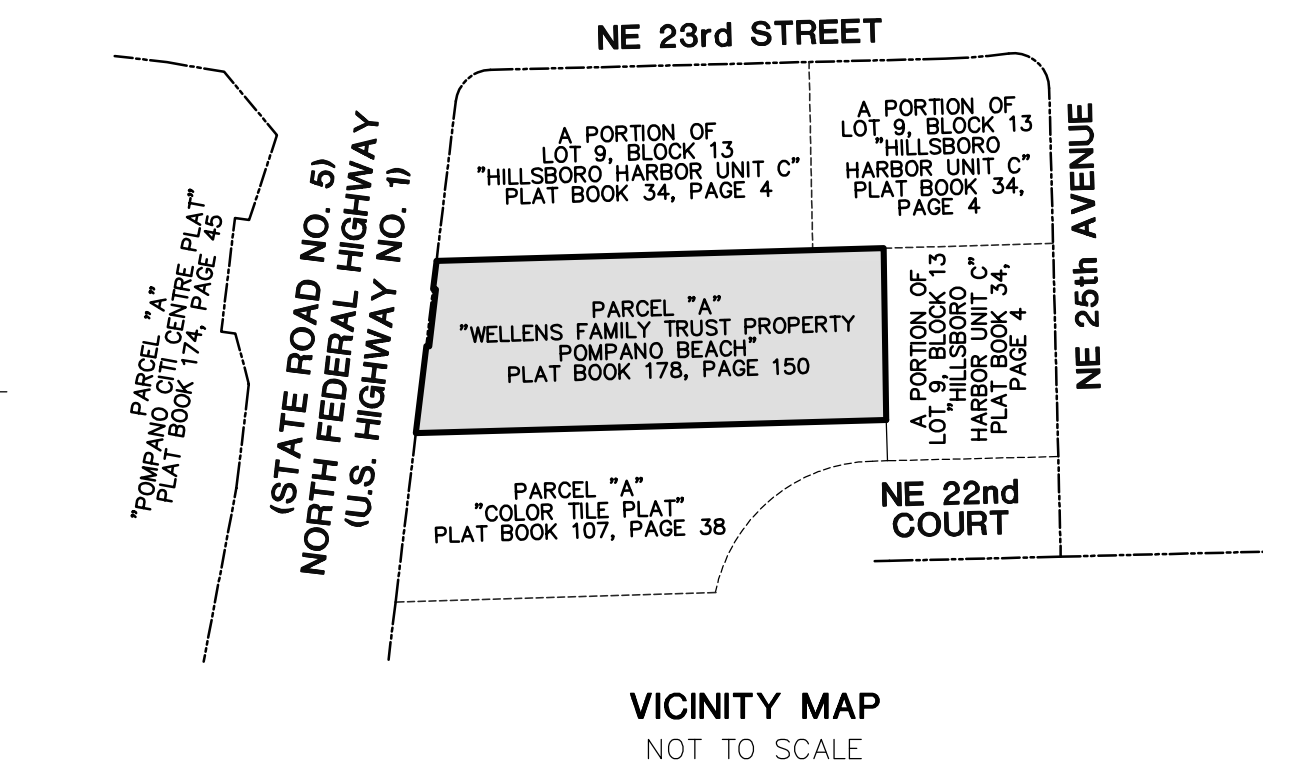
### CERTIFICATION:

I HEREBY CERTIFY: THAT THIS SKETCH OF SURVEY MEETS THE STANDARDS OF PRACTICE SET FORTH BY THE FLORIDA DEPARTMENT OF AGRICULTURE AND CONSUMER SERVICES ("DOACS") CHAPTER 5J-17, FLORIDA ADMINISTRATIVE CODE, PURSUANT TO SECTION 472.027, FLORIDA STATUTES.

Digitally signed by John F Pulice

Date: 2021.07.06 14:38:49

JOHN F. PULICE, PROFESSIONAL SURVEYOR AND MAPPER LS6136  
DONNA C. WEST, PROFESSIONAL SURVEYOR AND MAPPER LS6274  
STATE OF FLORIDA



COPYRIGHT 2021 BY PULICE LAND SURVEYORS, INC. ALL RIGHTS RESERVED. NO PART OF THIS SURVEY MAY BE REPRODUCED, IN ANY FORM OR BY ANY MEANS, WITHOUT PERMISSION IN WRITING FROM AN OFFICER OF PULICE LAND SURVEYORS, INC.

NO.	REVISIONS	BY
1	ADDED TREE TABLE & LABELS 6/17/21	B.B.

### BOUNDARY AND TOPOGRAPHIC SURVEY

**PULICE LAND SURVEYORS, INC.**  
5381 NOB HILL ROAD  
SUNRISE, FLORIDA 33351  
TELEPHONE: (954) 572-1777  
FAX: (954) 572-1778  
E-MAIL: [info@puliceandsurveyors.com](mailto:info@puliceandsurveyors.com)  
WEBSITE: [www.puliceandsurveyors.com](http://www.puliceandsurveyors.com)  
CERTIFICATE OF AUTHORIZATION #13870

**CHICK-FIL-A SITE**  
2250 NORTH FEDERAL HIGHWAY  
POMPAÑO BEACH, BROWARD COUNTY,  
FLORIDA 33062

**FILE: BOWMAN CONSULTING GROUP, LTD**  
OFFER NO. 1846

**DRAWN BY: L.H.**

**CHECKED BY: J.F.P.**

**SCALE: 1" = 20'**

**SURVEY DATE: 5/18/21**

**OFFER NO. 1846**

GRAPHIC SCALE  
1" = 20'

PZ21-16500001  
10/27/21

PZ21-16500001  
9/22/21